



# Ayame

1M

ONE MARBELLA  
LUXURY PROPERTY



FLOOR  
PLANS



## MEASUREMENTS

### PLANTA BAJA

Superficie Construida	273,55 m <sup>2</sup>
Superficie Útil	238,06 m <sup>2</sup>
Terrazas Cubiertas	116,19 m <sup>2</sup>
Terrazas No Cubiertas	150,17 m <sup>2</sup>

### PRIMERA PLANTA

Superficie Construida	109,22 m <sup>2</sup>
Superficie Útil	86,45 m <sup>2</sup>
Terrazas Cubiertas	59,64 m <sup>2</sup>

### SÓTANO

Superficie Construida	93,95 m <sup>2</sup>
Superficie Útil	35,18 m <sup>2</sup>

### GROUND FLOOR

Built Area	273,55 m <sup>2</sup>
Useful Area	238,06 m <sup>2</sup>
Covered Terraces	116,19 m <sup>2</sup>
Uncovered Terraces	150,17 m <sup>2</sup>

### FIRST FLOOR

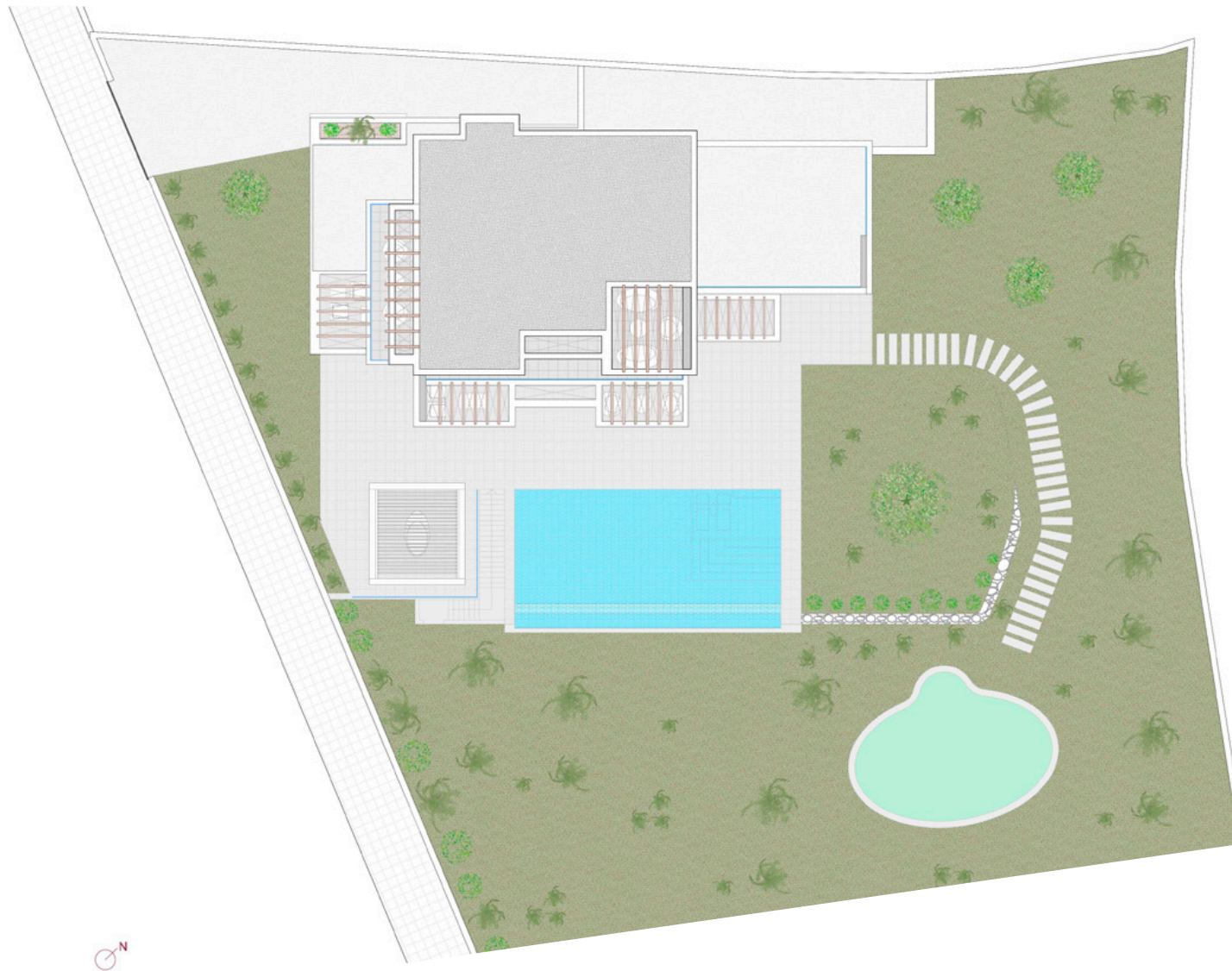
Built Area	109,22 m <sup>2</sup>
Useful Area	86,45 m <sup>2</sup>
Covered Terraces	59,64 m <sup>2</sup>

### BASEMENT

Built Area	93,95 m <sup>2</sup>
Useful Area	35,18 m <sup>2</sup>



# MASTERPLAN



LOS PLANOS SON PARA FINES COMERCIALES Y LOS DATOS AQUÍ REFLEJADOS QUE CORRESPONDEN AL ANTEPROYECTO PODRÁN AJUSTARSE PARA ADAPTACIÓN A NORMATIVA VIGENTE Y/O VIABILIDAD TÉCNICA.

THE PLANS ARE FOR COMMERCIAL PURPOSES AND THE DATA REFLECTED HERE CORRESPOND TO THE PRELIMINARY PROJECT MAY BE ADJUSTED TO ADAPT TO CURRENT REGULATIONS AND / OR TECHNICAL FEASIBILITY.





# GROUND FLOOR



LOS PLANOS SON PARA FINES COMERCIALES Y LOS DATOS AQUÍ REFLEJADOS QUE CORRESPONDEN AL ANTEPROYECTO PODRÁN AJUSTARSE PARA ADAPTACIÓN A NORMATIVA VIGENTE Y/O VIABILIDAD TÉCNICA.

THE PLANS ARE FOR COMMERCIAL PURPOSES AND THE DATA REFLECTED HERE CORRESPOND TO THE PRELIMINARY PROJECT MAY BE ADJUSTED TO ADAPT TO CURRENT REGULATIONS AND / OR TECHNICAL FEASIBILITY.





# FIRST FLOOR



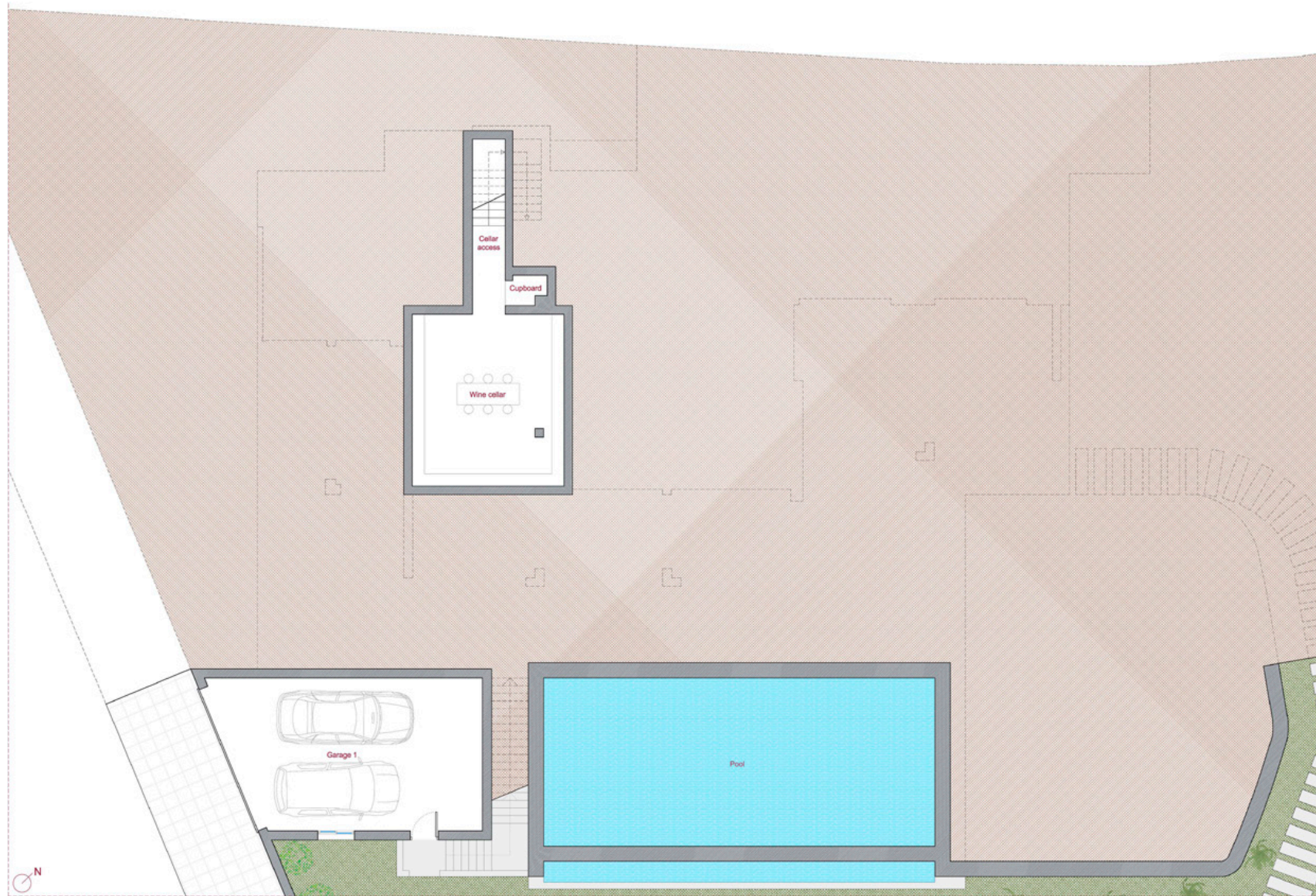
LOS PLANOS SON PARA FINES COMERCIALES Y LOS DATOS AQUÍ REFLEJADOS QUE CORRESPONDEN AL ANTEPROYECTO PODRÁN AJUSTARSE PARA ADAPTACIÓN A NORMATIVA VIGENTE Y/O VIABILIDAD TÉCNICA.

THE PLANS ARE FOR COMMERCIAL PURPOSES AND THE DATA REFLECTED HERE CORRESPOND TO THE PRELIMINARY PROJECT MAY BE ADJUSTED TO ADAPT TO CURRENT REGULATIONS AND / OR TECHNICAL FEASIBILITY.





# BASEMENT



LOS PLANOS SON PARA FINES COMERCIALES Y LOS DATOS AQUÍ REFLEJADOS QUE CORRESPONDEN AL ANTEPROYECTO PODRÁN AJUSTARSE PARA ADAPTACIÓN A NORMATIVA VIGENTE Y/O VIABILIDAD TÉCNICA.

THE PLANS ARE FOR COMMERCIAL PURPOSES AND THE DATA REFLECTED HERE CORRESPOND TO THE PRELIMINARY PROJECT MAY BE ADJUSTED TO ADAPT TO CURRENT REGULATIONS AND / OR TECHNICAL FEASIBILITY.



ONE MARBELLA  

---

LUXURY PROPERTY

[www.one-marbella.com](http://www.one-marbella.com)

This brochure is for marketing purposes only and does not form part of any offer or contract between any of the parties in any way. All the information contained in this brochure is known to be accurate at the time of production but is subject to change without prior notice. Note that images contained herein are based on technical plans and are computer generated artistic renders of these plans. Whilst the greatest care has been taken to ensure accuracy of the information.