

ATICO "B" / PENTHOUSE "B"
Edificios / Buildings: 1-2-3-4-5-6-7-8-9-10

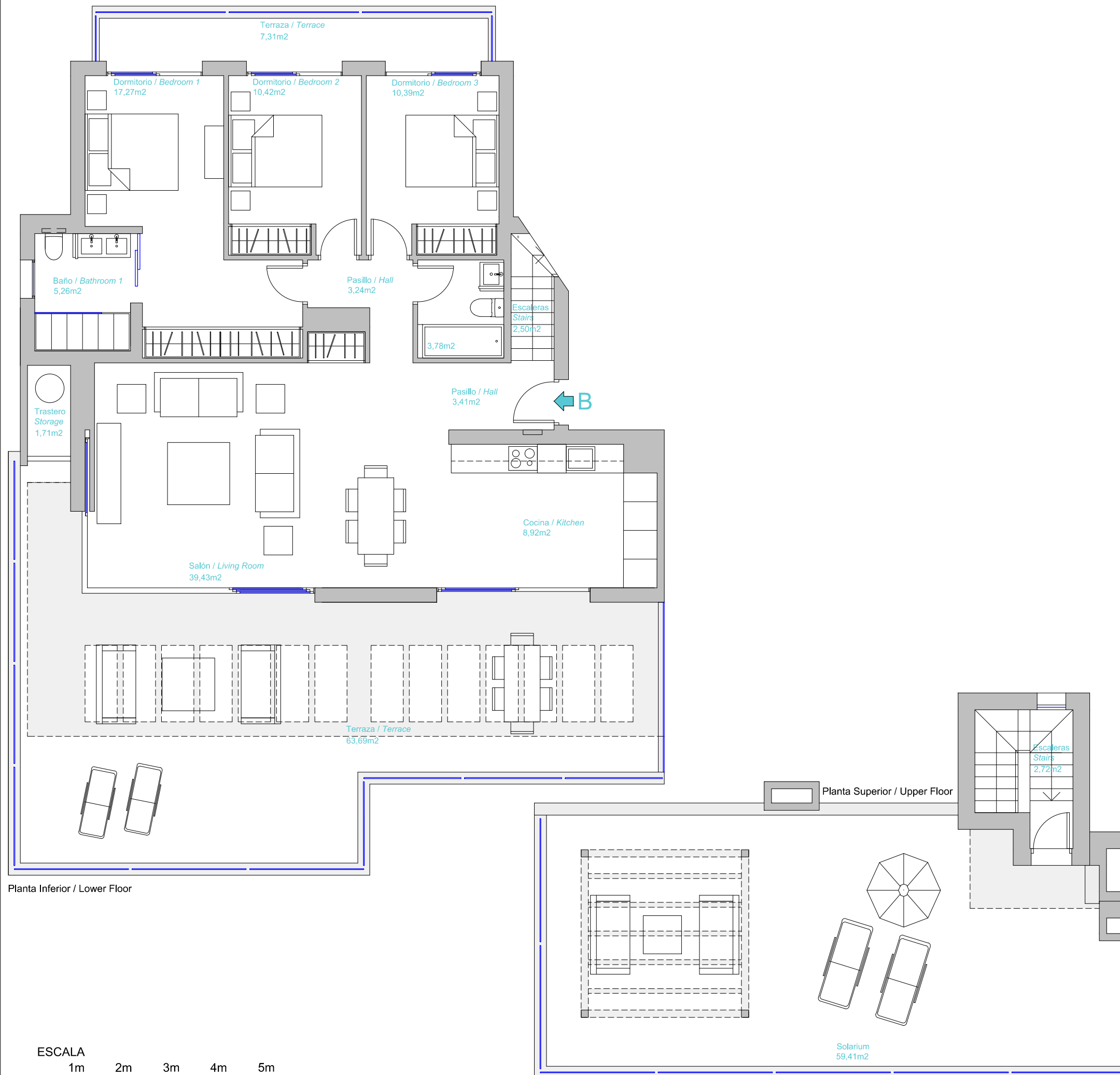
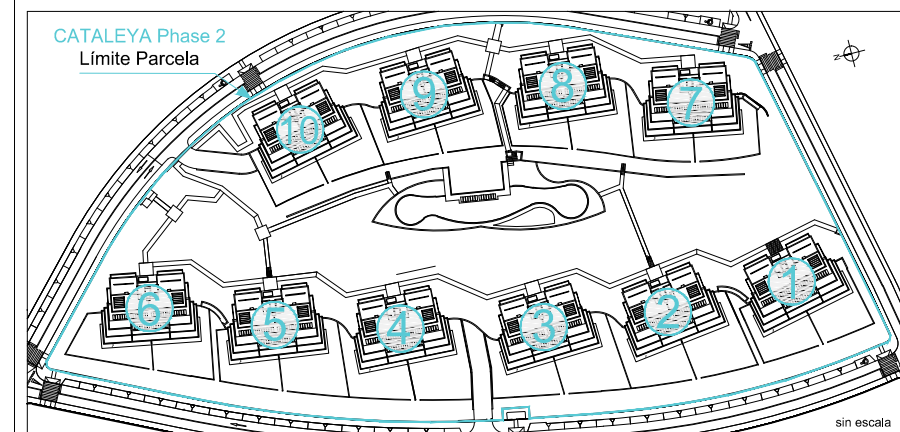
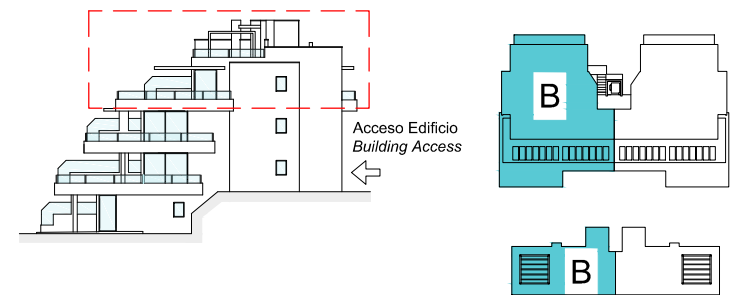
SUP. CONSTRUIDA / BUILT AREA

Cerrada Vivienda / Built:	133,74 m ²
Terraza / Terrace:	79,87 m ²
Solarium:	65,84 m ²
Comunes / Communal:	18,10 m ²

SUP.TOTAL CONSTRUIDA: 297,55 m²
TOTAL BUILT AREA:

Sup. Útil según Decreto 218/2005:	119,96 m ²
Living area according decree 218/2005:	

La superficie mostrada en cada estancia, corresponde a superficie útil.



ESCALA
1m 2m 3m 4m 5m

ATICO "A" / PENTHOUSE "A"
Edificios / Buildings: 1-2-3-4-5-6-7-8-9-10

SUP. CONSTRUIDA / BUILT AREA

Cerrada Vivienda / Built:	133,74 m ²
Terraza / Terrace:	79,87 m ²
Solarium:	65,84 m ²
Comunes / Communal:	18,10 m ²

SUP.TOTAL CONSTRUIDA: 297,55 m²
TOTAL BUILT AREA:

Sup. Útil según Decreto 218/2005:	119,96 m ²
Living area according decree 218/2005:	

La superficie mostrada en cada estancia, corresponde a superficie útil.

