

SEGUNDO "C" / SECOND FLOOR "C"

Edificios / Buildings: 1-2-3-4-5-6-7-8-9-10

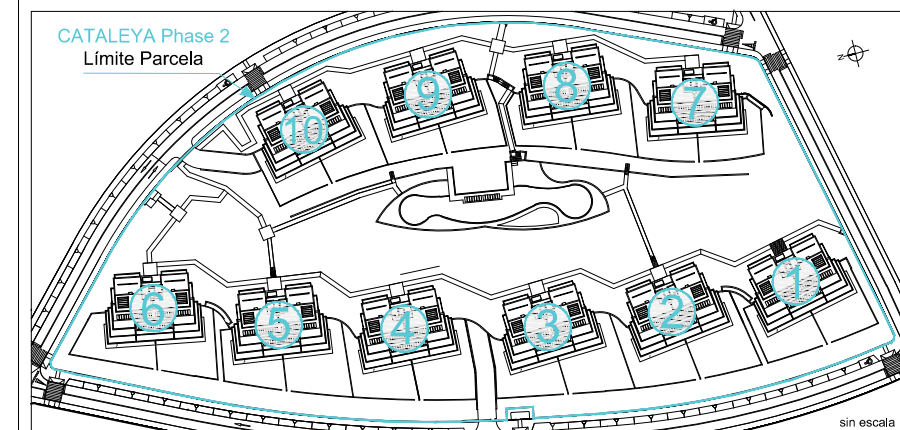
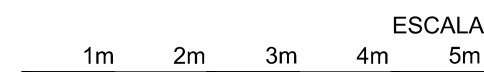
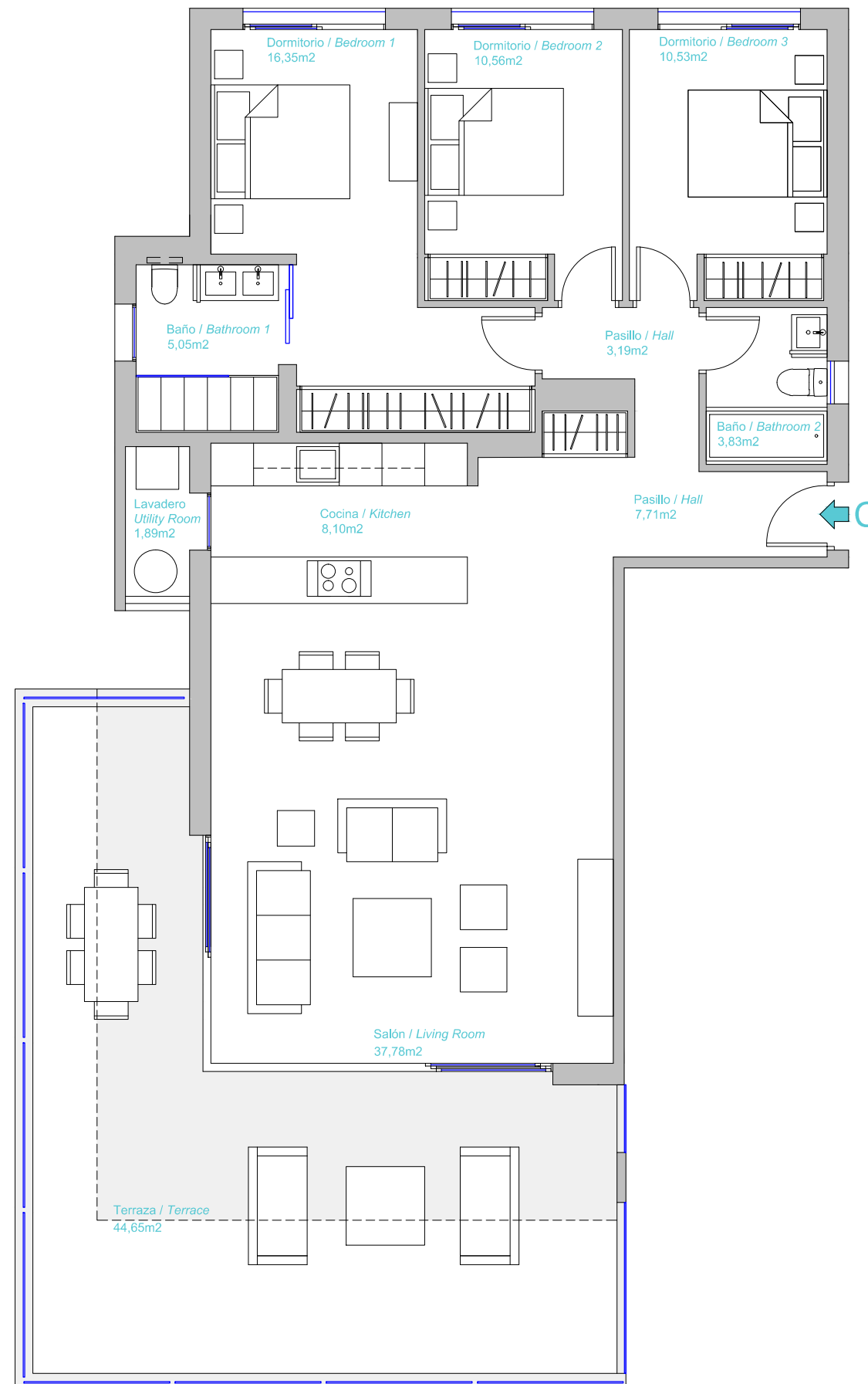
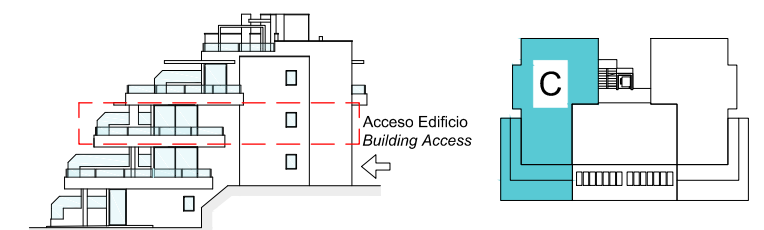
SUP. CONSTRUIDA / BUILT AREA

Cerrada Vivienda / Built:	122,07 m ²
Terraza / Terrace:	50,47 m ²
Comunes / Communal:	16,52 m ²

SUP.TOTAL CONSTRUIDA: 189,06 m²
TOTAL BUILT AREA:

Sup. Útil según Decreto 218/2005: 115,49 m²
Living area according decree 218/2005:

La superficie mostrada en cada estancia, corresponde a superficie útil.



SEGUNDO "A" / SECOND FLOOR "A"

Edificios / Buildings: 1-2-3-4-5-6-7-8-9-10

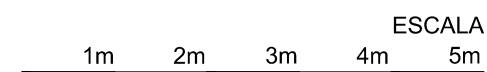
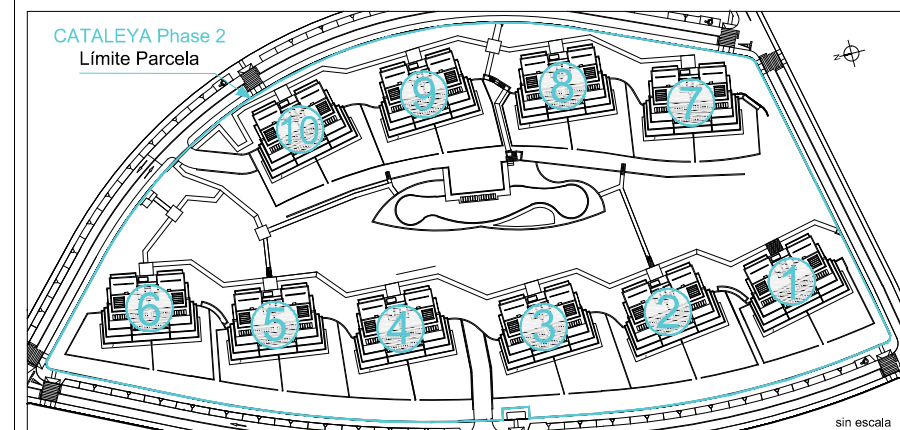
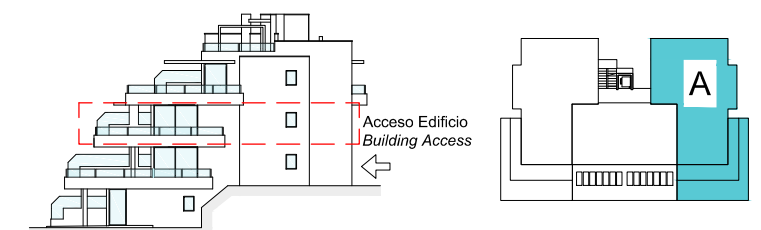
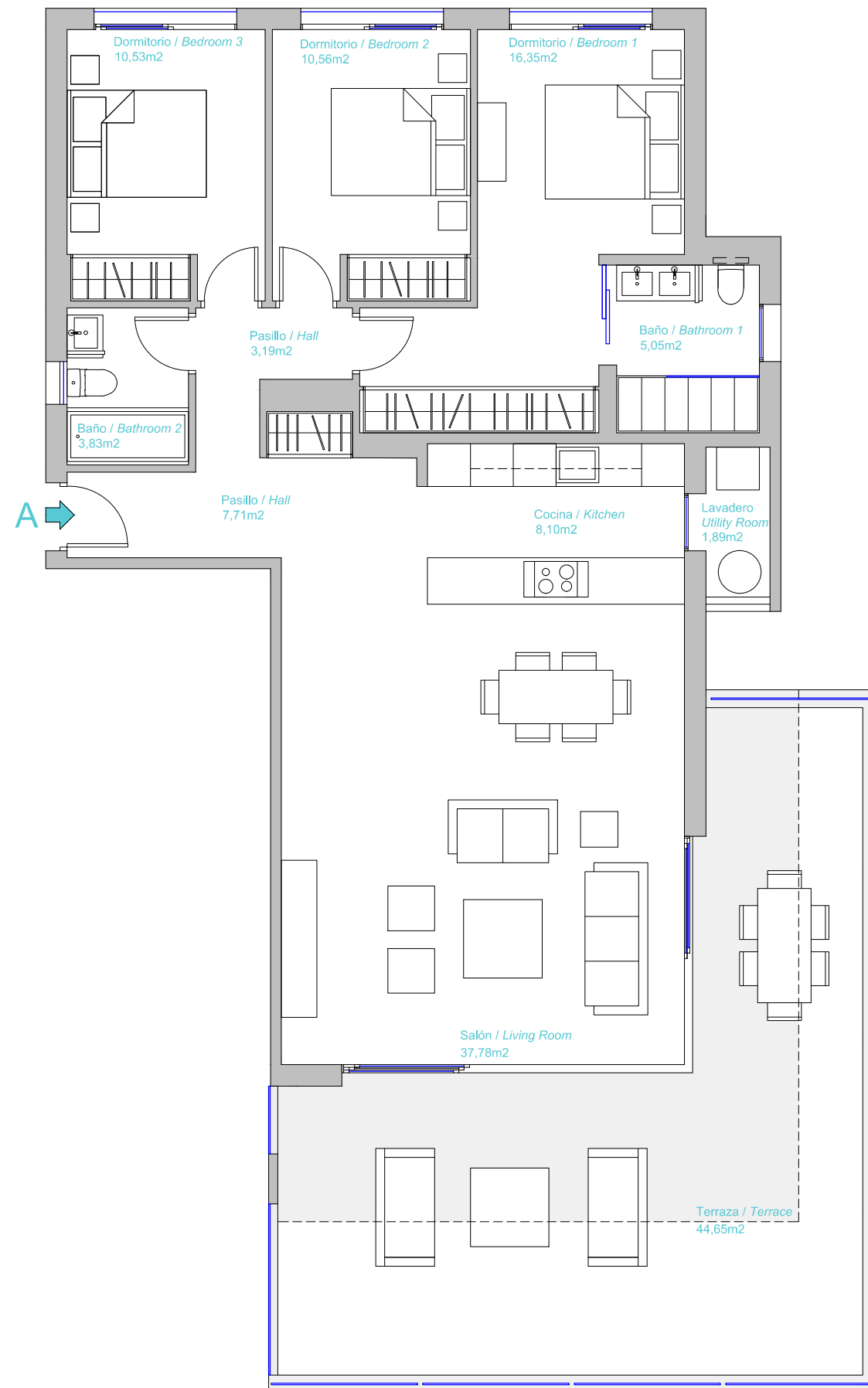
SUP. CONSTRUIDA / BUILT AREA

Cerrada Vivienda / Built: 122,07 m²
 Terraza / Terrace: 50,47 m²
 Comunes / Communal: 16,52 m²

SUP.TOTAL CONSTRUIDA: 189,06 m²
TOTAL BUILT AREA:

Sup. Útil según Decreto 218/2005: 115,49 m²
 Living area according decree 218/2005:

La superficie mostrada en cada estancia, corresponde a superficie útil.



SEGUNDO "B" / SECOND FLOOR "B"
Edificios / Buildings: 2-3-4

SUP. CONSTRUIDA / BUILT AREA

Cerrada Vivienda / Built:	91,35 m ²
Terraza / Terrace:	53,96 m ²
Comunes / Communal:	12,36 m ²

SUP.TOTAL CONSTRUIDA: 157,67 m²
TOTAL BUILT AREA:

Sup. Útil según Decreto 218/2005: 88,91 m²
Living area according decree 218/2005:

La superficie mostrada en cada estancia, corresponde a superficie útil.

