

ATICO "B" / PENTHOUSE "B"

Edificios / Buildings 1-2-3-4

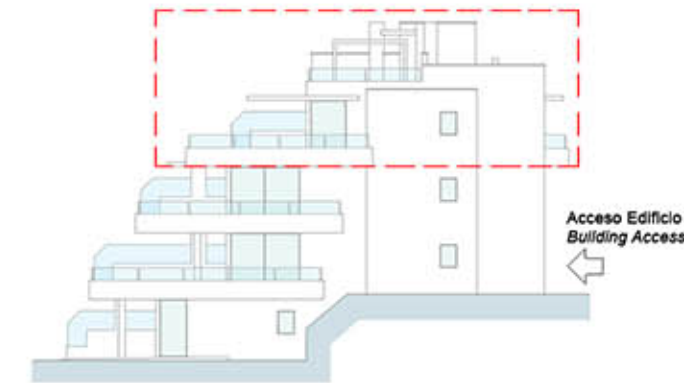
SUP. CONSTRUIDA / BUILT AREA

Cerrada vivienda / Built:	133,74 m ²
Terraza / Terrace:	79,87 m ²
Solarium:	65,84 m ²
Comunes / Communal:	15,98 m ²

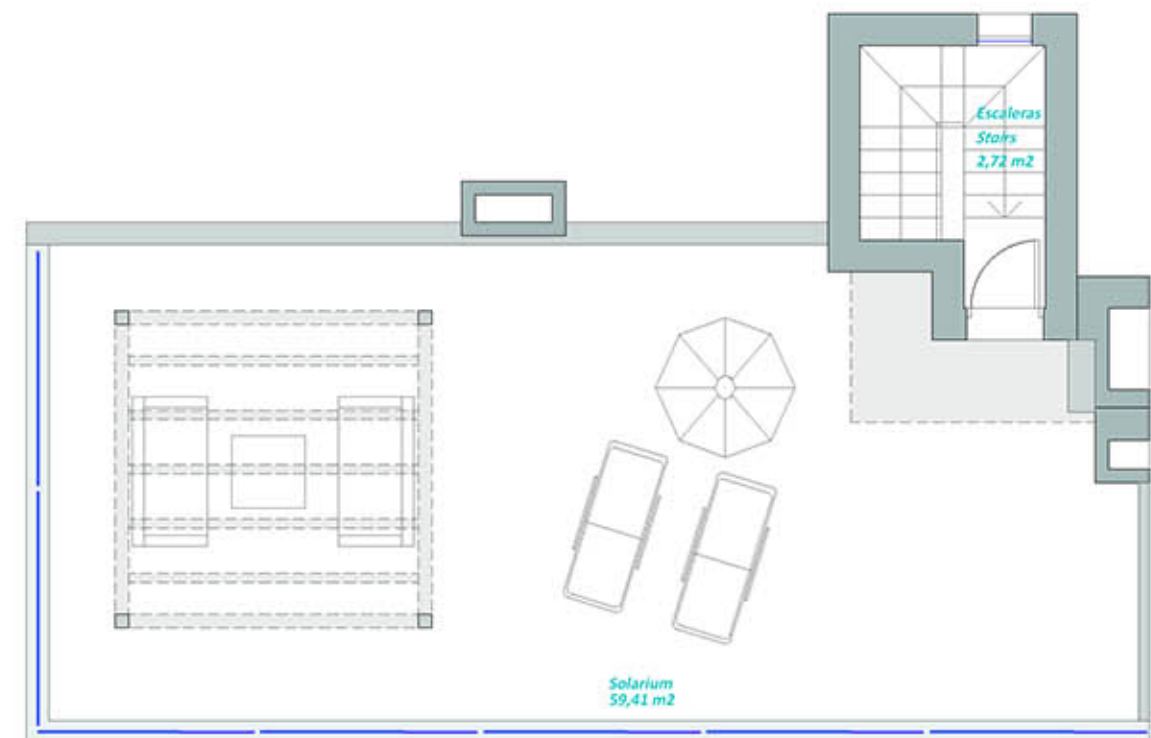
SUP. TOTAL CONSTRUIDA:
TOTAL BUILT AREA: 295,43 m²

Sup. Útil según Real Decreto 218/2005: 119,96 m²
Living area according decree 218/2005:

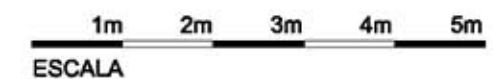
La superficie mostrada en cada estancia, corresponde a superficie útil.

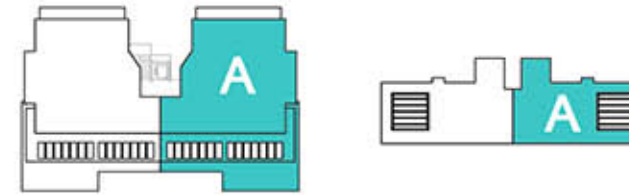
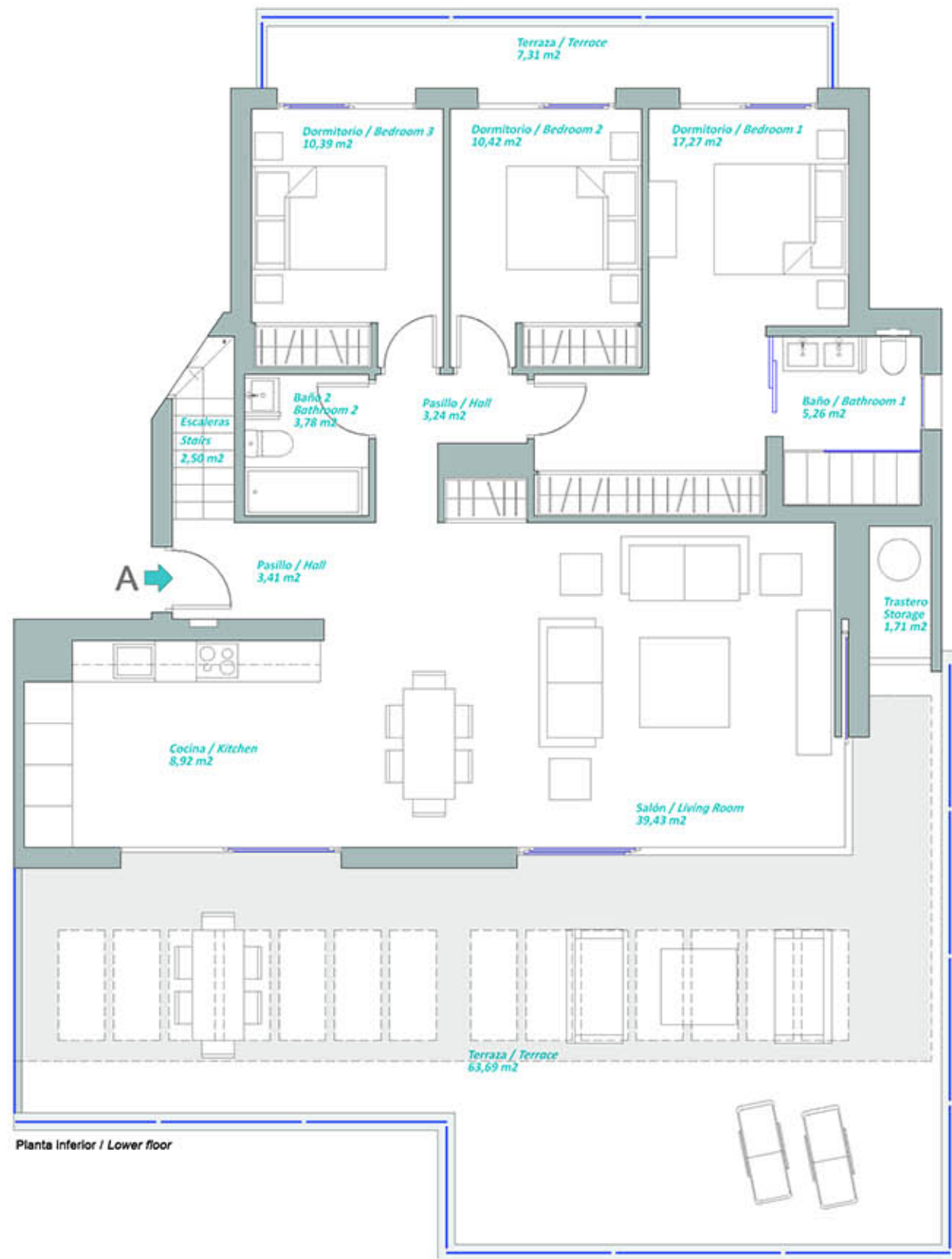


Pianta inferior / Lower floor



Pianta superior / Upper floor





ATICO "A" / PENTHOUSE "A"

Edificios / Buildings 1-2-3-4

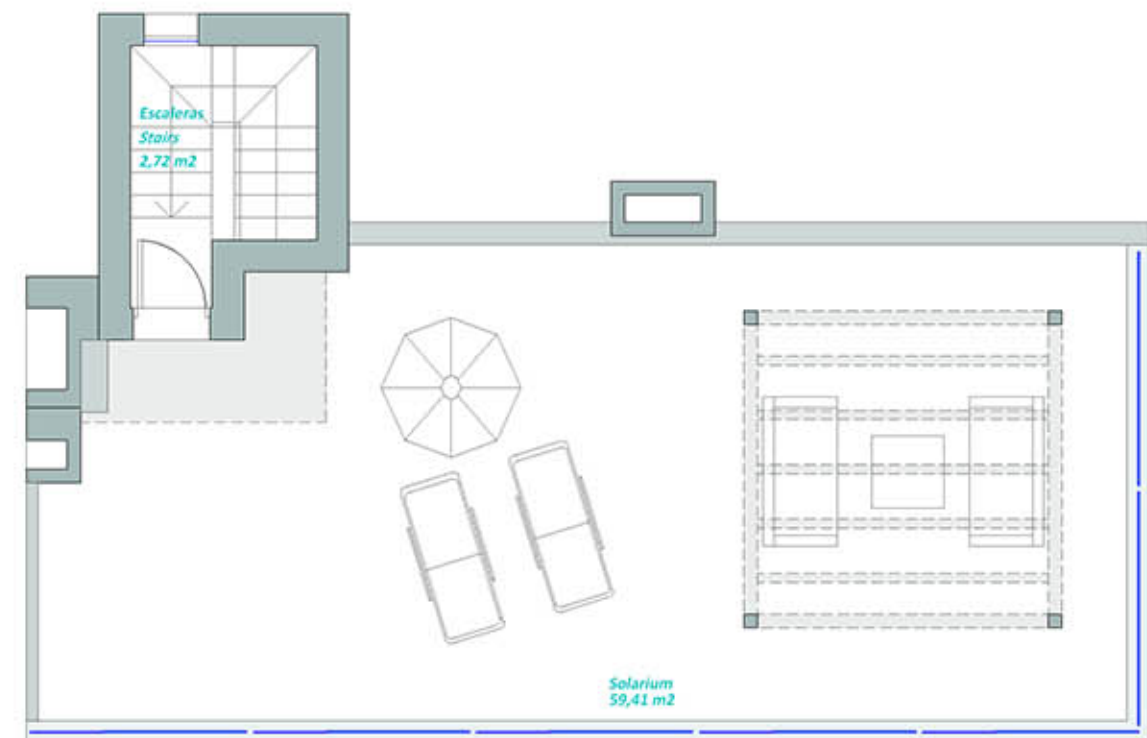
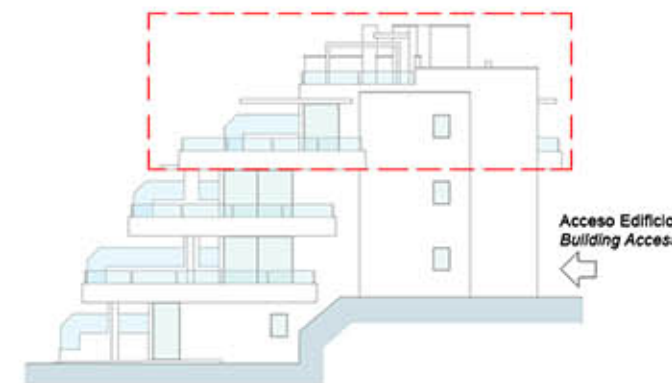
SUP. CONSTRUIDA / BUILT AREA

Cerrada vivienda / Built:	133,74 m ²
Terraza / Terrace:	79,87 m ²
Solarium:	65,84 m ²
Comunes / Communal:	15,98 m ²

SUP. TOTAL CONSTRUIDA:
TOTAL BUILT AREA: 295,43 m²

Sup. Útil según Real Decreto 218/2005: 119,96 m²
Living area according decree 218/2005:

La superficie mostrada en cada estancia, corresponde a superficie útil.



1m 2m 3m 4m 5m
ESCALA