

LA FINCA  
de  
J A S M I N E



1M

ONE~MARBELLA  
LUXURY REAL ESTATE

LA FINCA  
de  
J A S M I N E

*A unique development offering panoramic sea views, tranquility, privacy  
but close to everything the Coast has to offer.*



Benahavís Marbella municipality is a huge 145 km<sup>2</sup> of dramatic mountains, forests and countryside home to some of the most expensive villas in the world and the luxury enclaves of La Zagaleta and El Madroñal.

La Finca de Jasmine is located in the lower slopes on the border of Marbella with amazing sea views only 5 minutes to the blue flagged beaches of the Costa del Sol.

# J A S M I N E





O R G A N I C   A R C H I T E C T U R E   C O N C E P T



La Finca de Jasmine is a gated and secure community of villas with club house, spa and gym with verdant Mediterranean gardens and amazing panoramic sea views.



*Club House facilities.* →



## ...IN THE BEAUTIFUL GOLDEN TRIANGLE AREA OF BENAHAVÍS, MARBELLA AND ESTEPONA

La Finca de Jasmine is located in the beautiful 'Golden Triangle' area of Benahavis, Marbella and Estepona, home to five star hotels and five star golf courses.

The traditional whitewashed spanish pueblo of Benahavís is a lovely 10 minutes drive through the gorge and is packed with restaurants, bars,

galleries and of course the facilities of small town such as post office, banks, schools and public / private sports.

Just 7 minutes to Puerto Banús, 15 minutes travelling East to Marbella and 20 minutes travelling West to Estepona the location offers easy access to some of the Costa del Sol's most popular destinations.

Benahavis is also the richest municipality in Andalucía and this ensures that the area is beautifully maintained and why it's a very popular destination for permanent living and second home owners.

# A P R I V I L E G E D L O C A T I O N



## ■ A HAVEN OF NATURAL BEAUTY

Nature lovers will feel right at home here as there are many nature trails to explore, a large reservoir used by many species of wildlife and the perfect place to sit and watch the world go by. There are few places on the Costa del Sol that enjoy such uninterrupted views of the surrounding mountains, woodlands and rivers.



↑ *Situated next to the best golf courses on the Costa del Sol.*



FIND THE PERFECT VILLA FOR YOU



# THE VILLAS

MODERN STYLISH INTERIORS WITH A VARIATION OF KITCHEN CONFIGURATIONS ALLOWS A PERSONALISED LIVING AREA.

La Finca de Jasmine is a gated and secure community of luxury villas with clubhouse and spa, covering a total of 269,000 m<sup>2</sup>. The initial phase will comprise of 14 villas with 3 types of configuration to suit your lifestyle choice.

Modern and contemporary properties with organic and natural elements in keeping with the surroundings. Verdant Mediterranean gardens and private pool with easy access to Marbella and Estepona within minutes makes this luxury residential project one of the most exciting in many years.

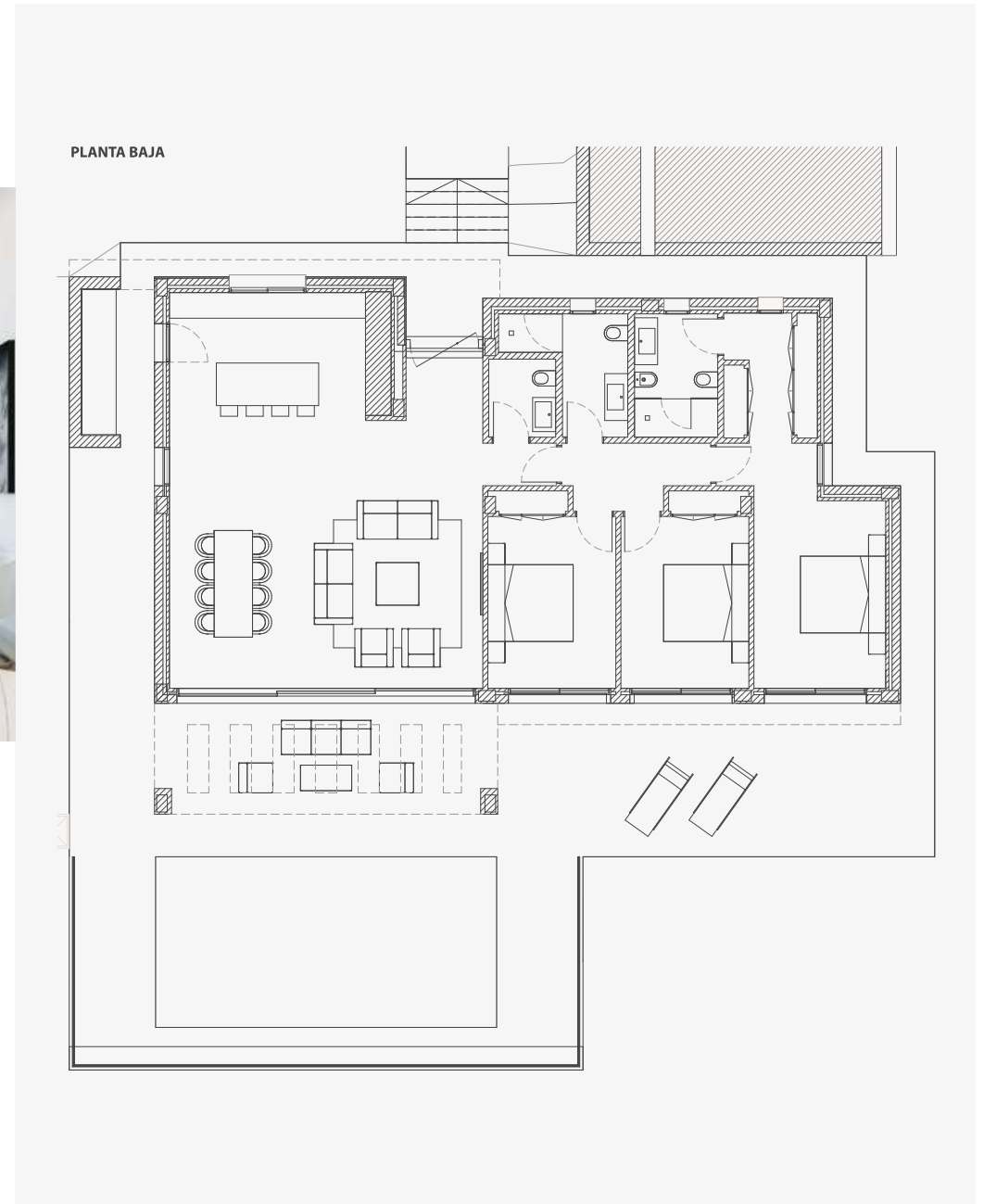


## PERSONALIZED LIVING AREA



### ■ VILLA ROMERO - 3 BEDROOMS

3 bedrooms and 3 bathrooms all on one level. The ground floor also contains a large open plan living space that includes a fully fitted kitchen, salon and dining room. The special feature of the Romero is the extra high ceilings and windows that allows the light to flood in the home.





L A R G E   O P E N   P L A N   L I V I N G   S P A C E

# GALLERY

■ ROMERO



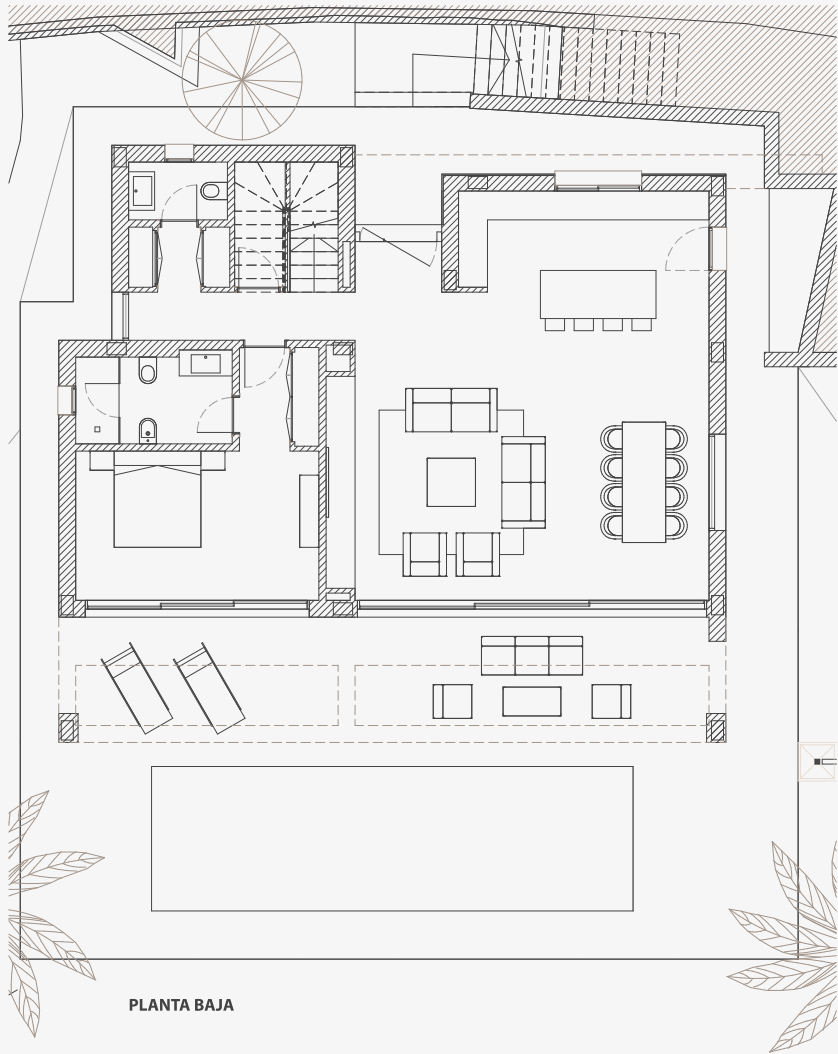




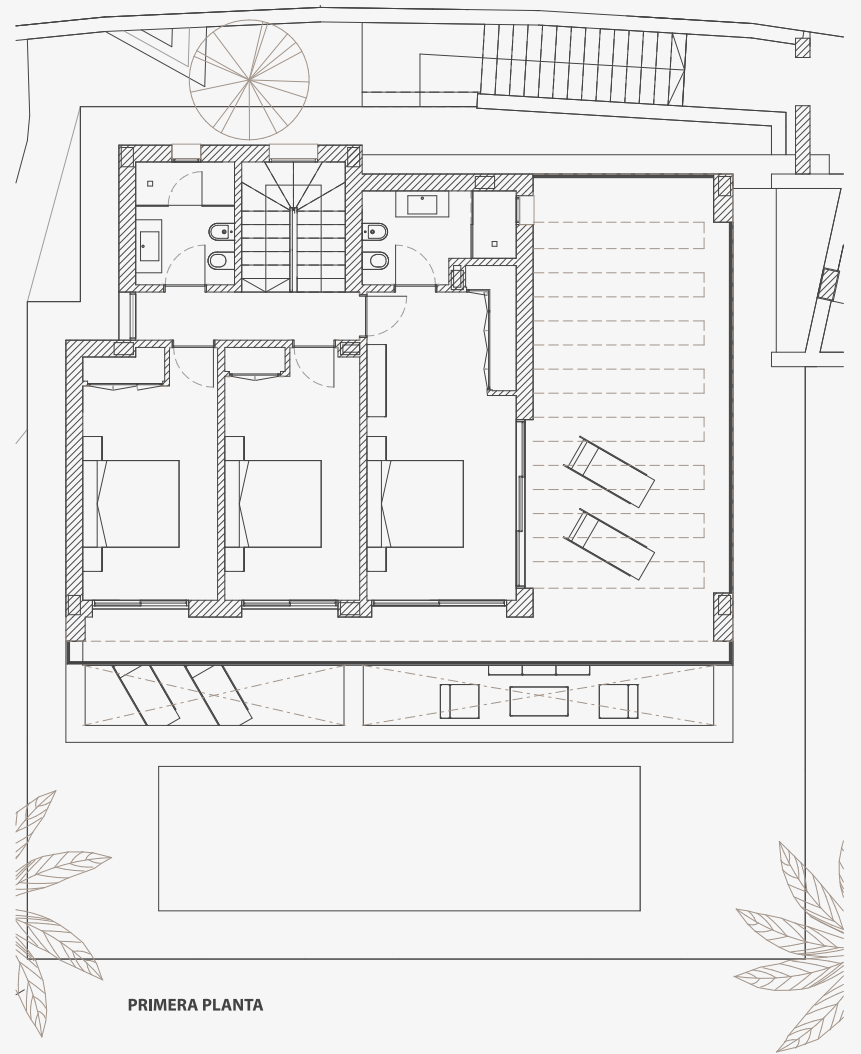
## ■ VILLA LAUREL - 4 BEDROOMS

4 bedrooms and 4 bathrooms spread over two levels. The ground floor contains a large open plan living space that includes a fully fitted kitchen, salon and dining room, as well as the master bedroom with en suite and a further guest bathroom. The first floor contains 3 guest bedrooms and 2 guest bathrooms with the versatility to create the master suite upstairs.





PLANTA BAJA



PRIMERA PLANTA

# GALLERY

■ LAUREL







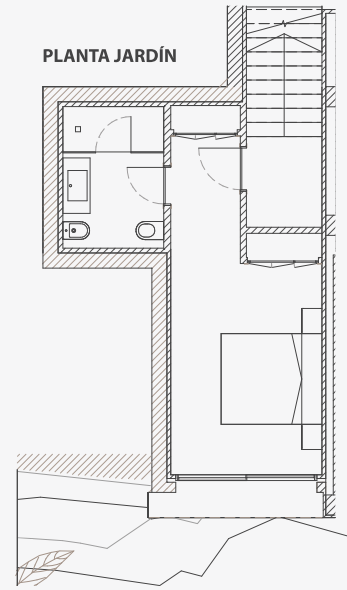


## ■ VILLA TOMILLO - 3 BEDROOMS

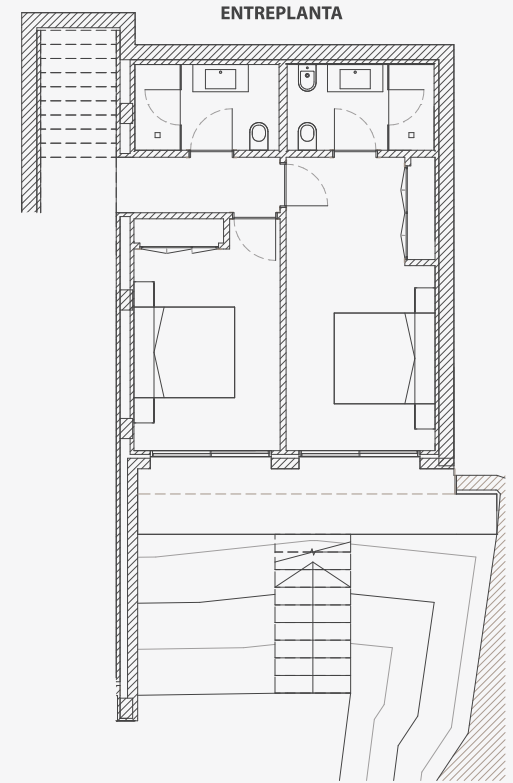
3 bedrooms and 3 bathrooms spread over three levels. On entering the villa you encounter a large open plan living space that includes a fully fitted kitchen, salon, dining room and guest WC. From there the stairs will lead you to the mezzanine level containing two guest bedrooms each with their own bathroom. The master suite is located on the garden level with an ensuite bathroom and access to your private landscaped garden. The unique feature of the Tomillo is the dual aspect terraces which allow you to follow the sun and change your stunning views as you wish another special feature of the Tomillo is the extra high ceilings and windows that allows the light to flood in the home.



PRIMERA PLANTA



PLANTA JARDÍN



ENTREPLANTA

# GALLERY

■ TOMILLO







## QUALITY SPECIFICATIONS

Highlight features include independent underfloor heating by water, floor-to-ceiling glass windows, integrating the inside living area with the terraces or pre-installation of Home Automation System.

Electric gates provide access to the villas, which feature a private 30m<sup>2</sup> carport and are set within landscaped gardens with a stunning private swimming pool with Sukabumi colour porcelain tiling.

- ✓ Fully equipped kitchen with Siemens appliances.
- ✓ Ceramic work surfaces.
- ✓ Landscaped Mediterranean themed gardens with private swimming pool.
- ✓ Bticino Living-light series or similar switches and sockets.
- ✓ Fully air conditioned hot and cold by hidden ducting.
- ✓ Underfloor heating throughout by water.
- ✓ Electric underfloor heating in bathrooms.



- ✓ Bathroom fittings by Villeroy & Boch and taps by Grohe or other leading brand.
- ✓ Pre-installation of Home Automation System.
- ✓ Bticino video entry system.
- ✓ "Gran formato" ( floor to ceiling ) ceramic wall tiles in the bathrooms.
- ✓ 90 x 90cm Ceramic porcelain floor tiles.
- ✓ Sliding Cortizo windows with thermal break and security double glazing.

# J A S M I N E

DISCLAIMER: This brochure is for marketing purposes only and does not form part of any offer or contract between any of the parties in any way. All the information contained in this brochure is known to be accurate at the time of production but is subject to change without prior notice. Note that images contained herein are based on technical plans and are computer generated artistic renders of these plans. Whilst the greatest care has been taken to ensure accuracy of the information contained in this brochure, the final project specifications and appearance can change. Anyone interested in obtaining up to date information, specifications, imagery or pricing should contact the commercialising entity listed in this brochure.







LA FINCA  
de  
J A S M I N E



ONE MARBELLA  
LUXURY PROPERTY  
[www.one-marbella.com](http://www.one-marbella.com)

