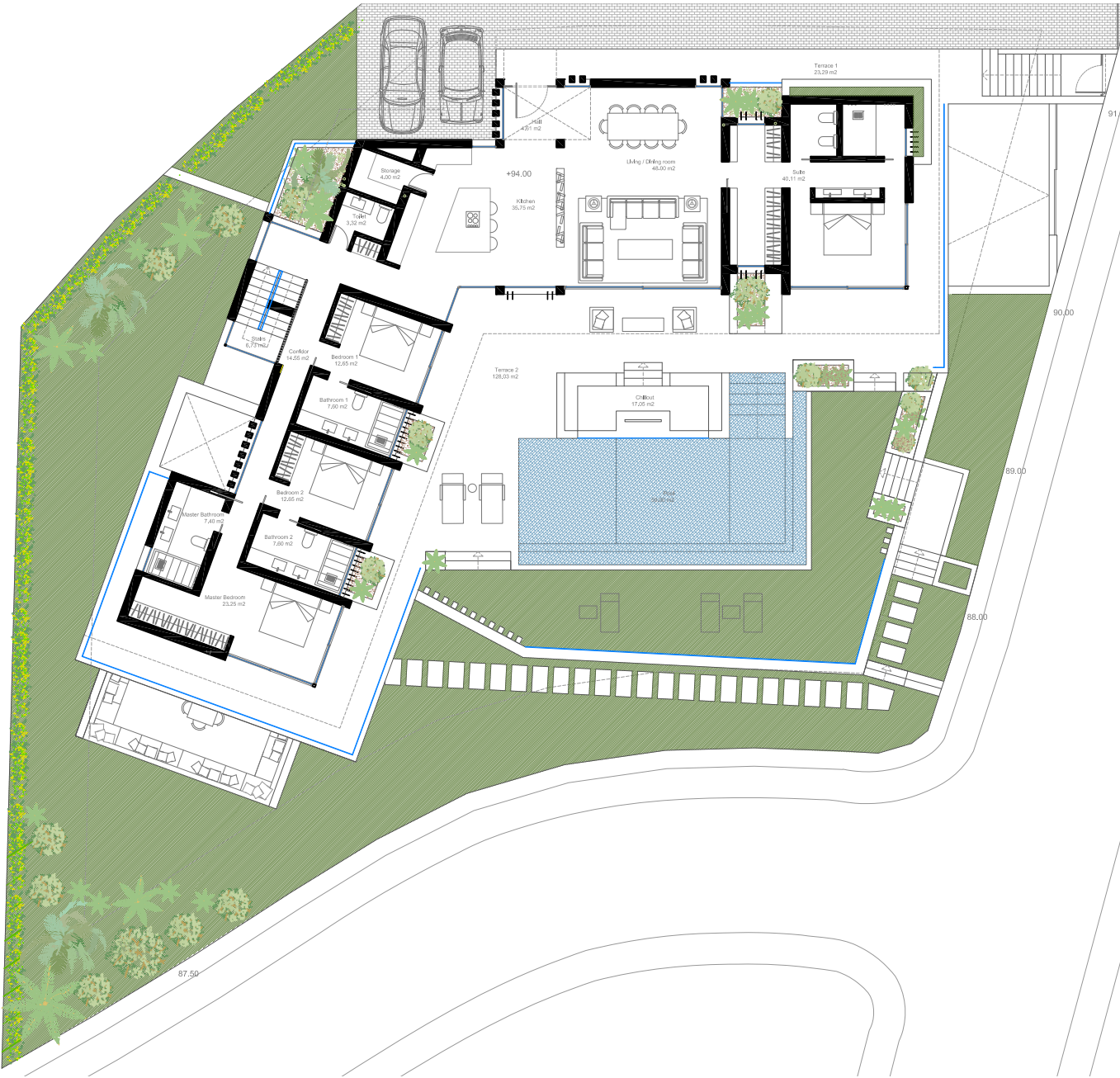
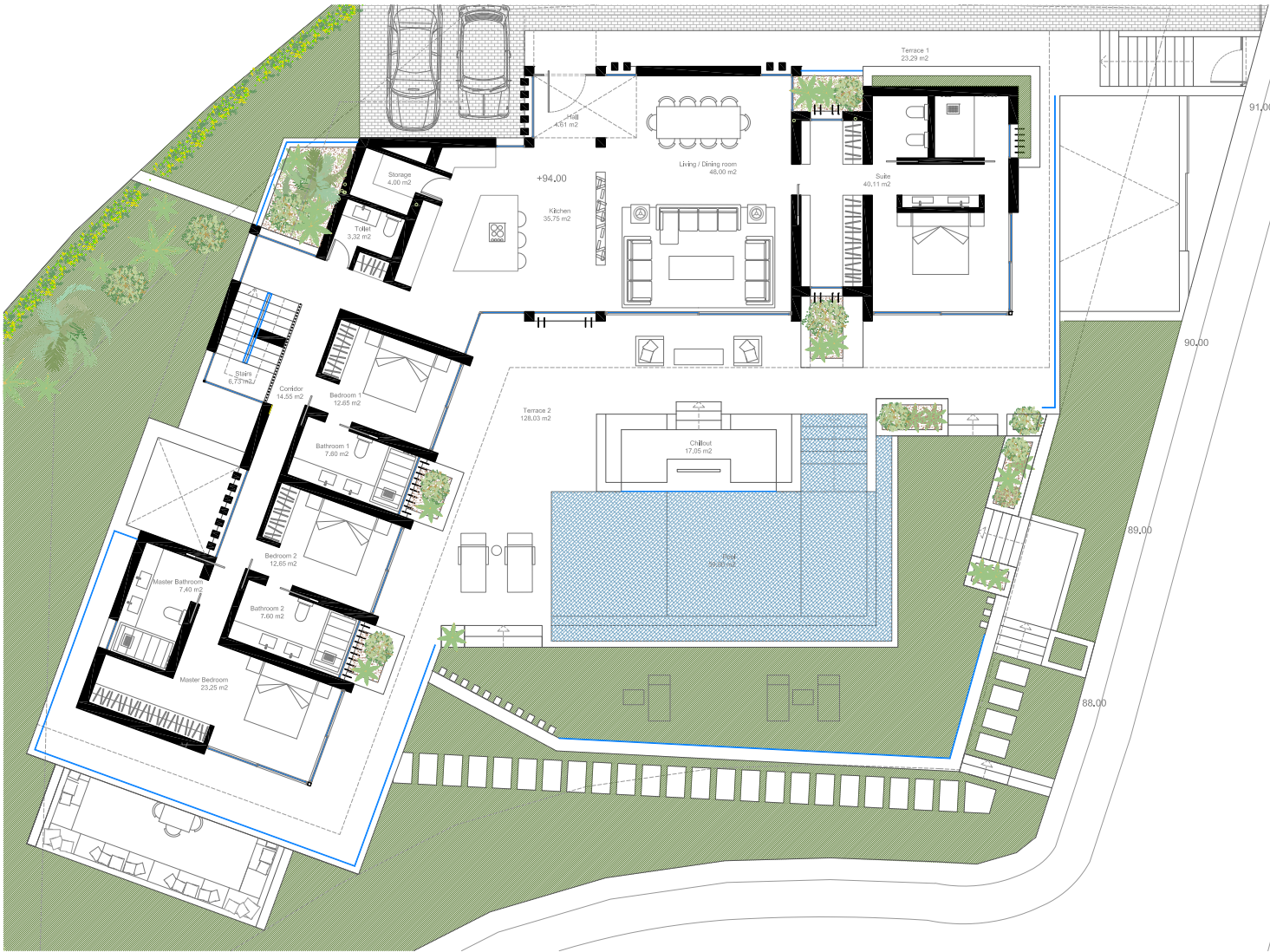


MASTERPLAN

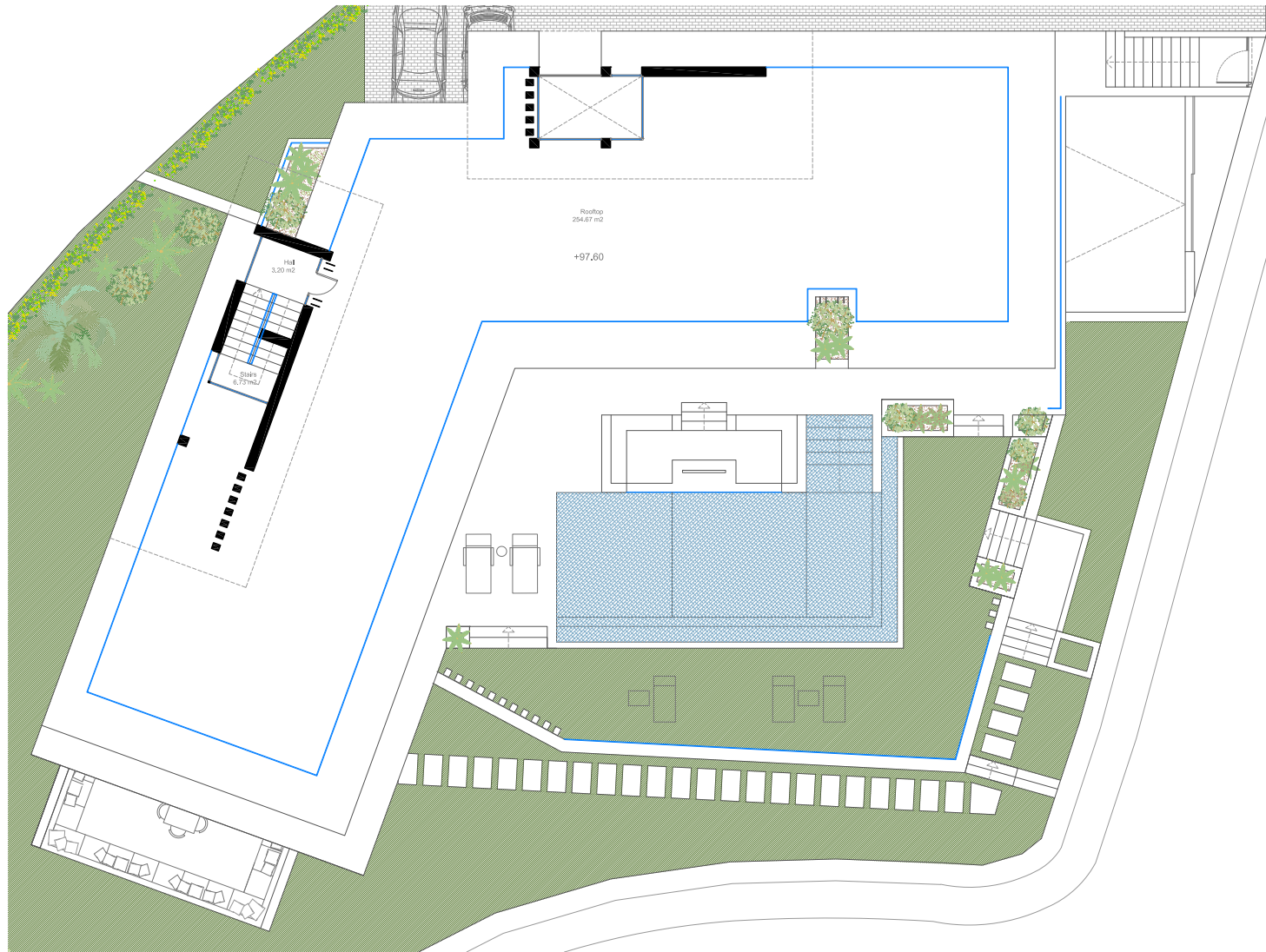


GROUND FLOOR



Built Living Area: 272,94 m²
Cover Terraces: 80.40 m²
Uncover Terraces: 70.92 m²
Pool: 59 m²

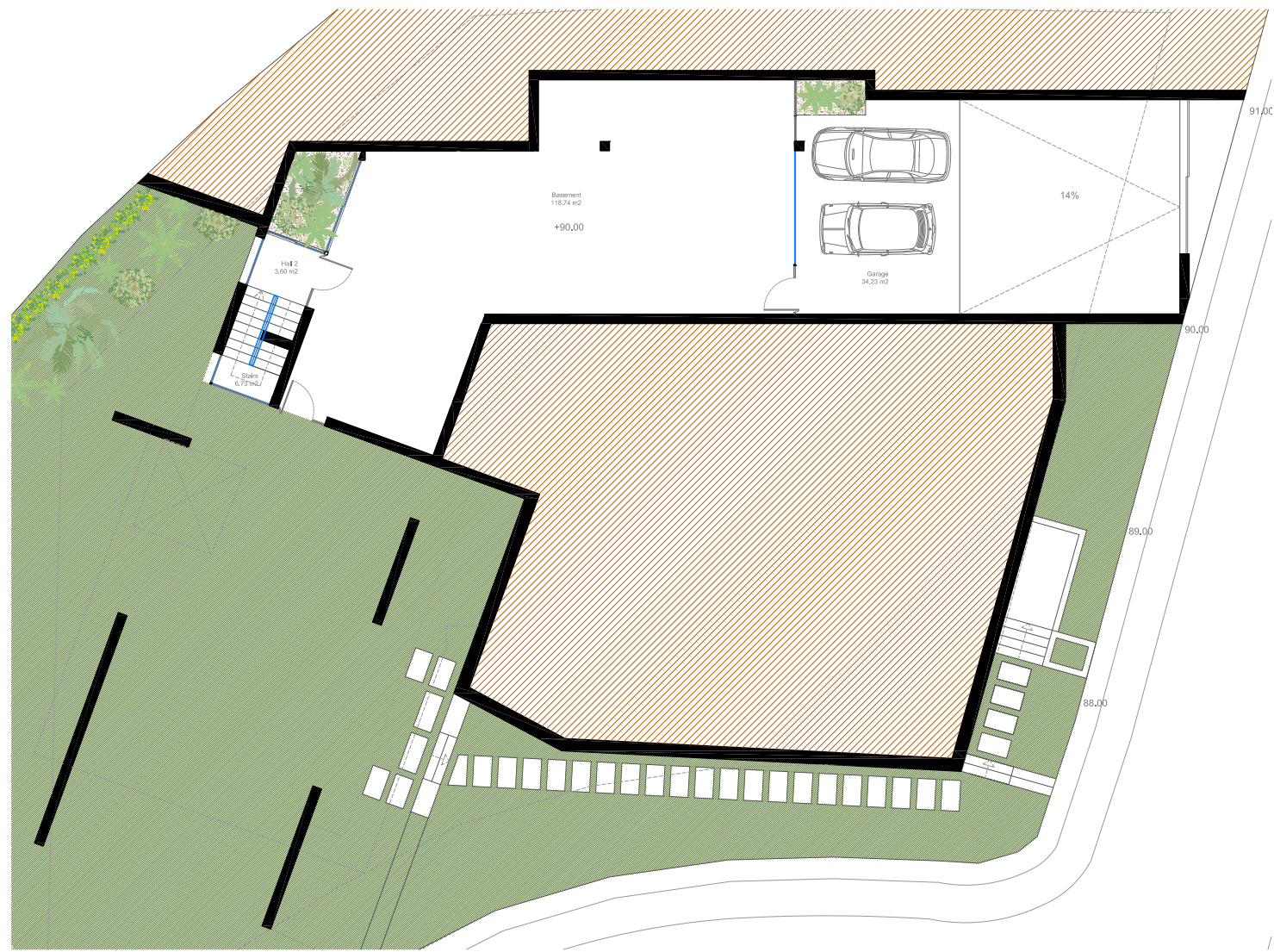
ROOF TOP



Built Living Area: 13,83 m²
Cover Terraces: 54,22 m²
Uncover Terraces: 200,45 m²

BASEMENT

Same finishes as the rest of the villa, without divisions

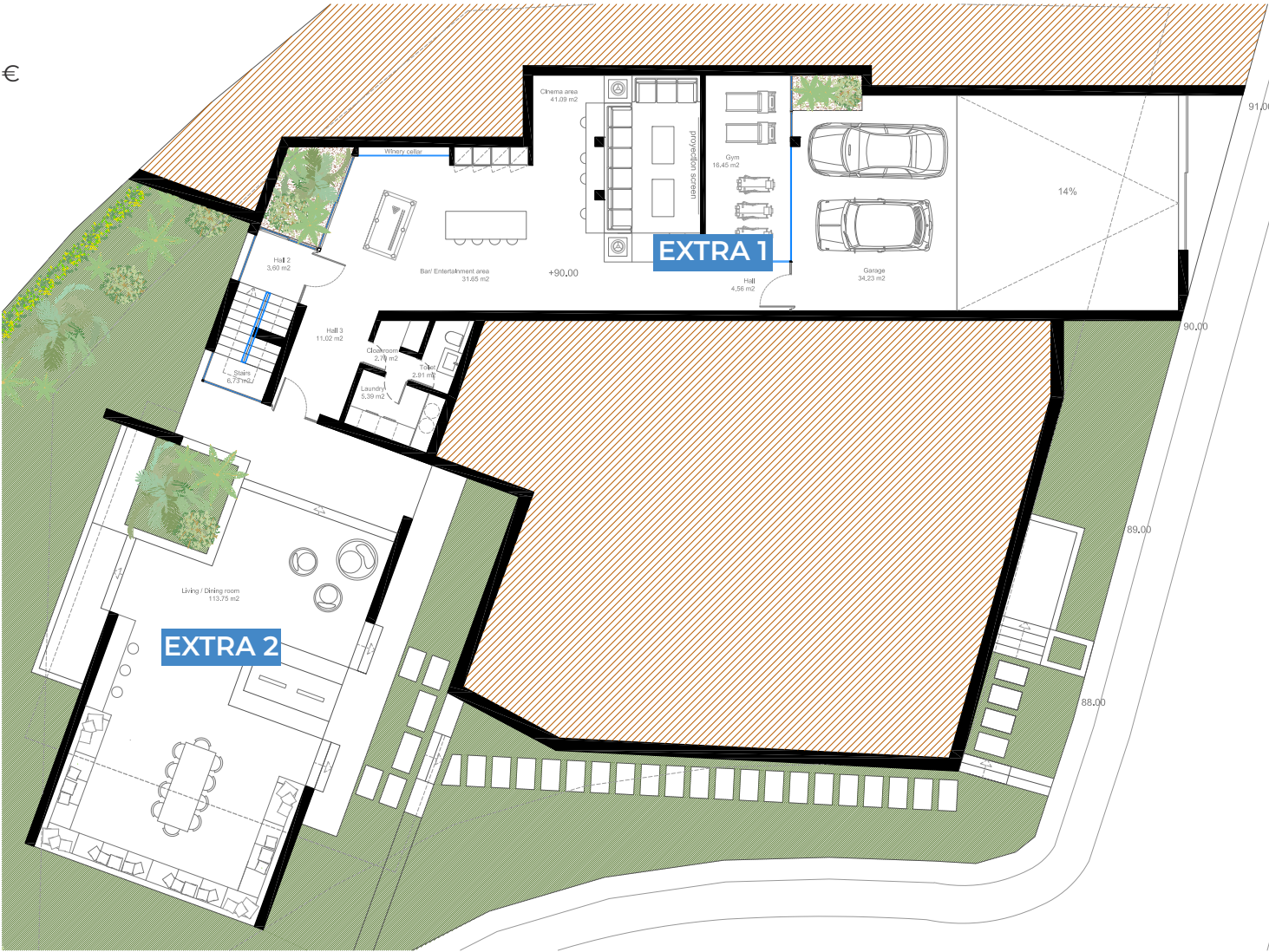


Built Living Area: 153,48

EXTRAS FOR BASEMENT

BASEMENT DIVISIONS:
EXTRA 158.700 €

BASEMENT TERRACE:
EXTRA 245.000 €



Built Living Area: 153,48 m²
Outdoor living: 113.75 m²